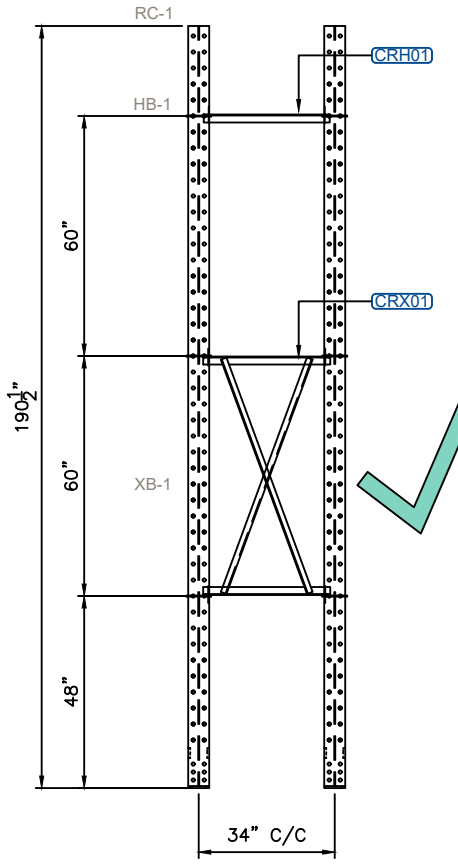
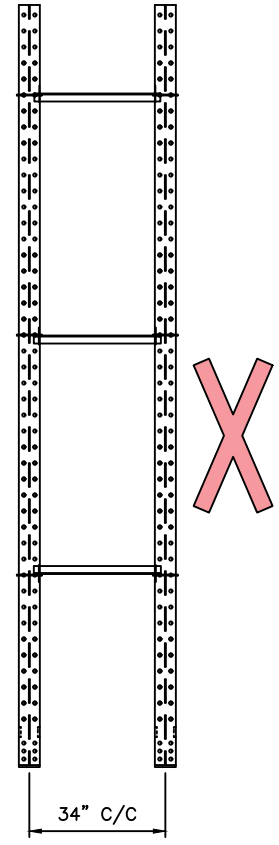


TYPICAL NON-SEISMIC BRACING

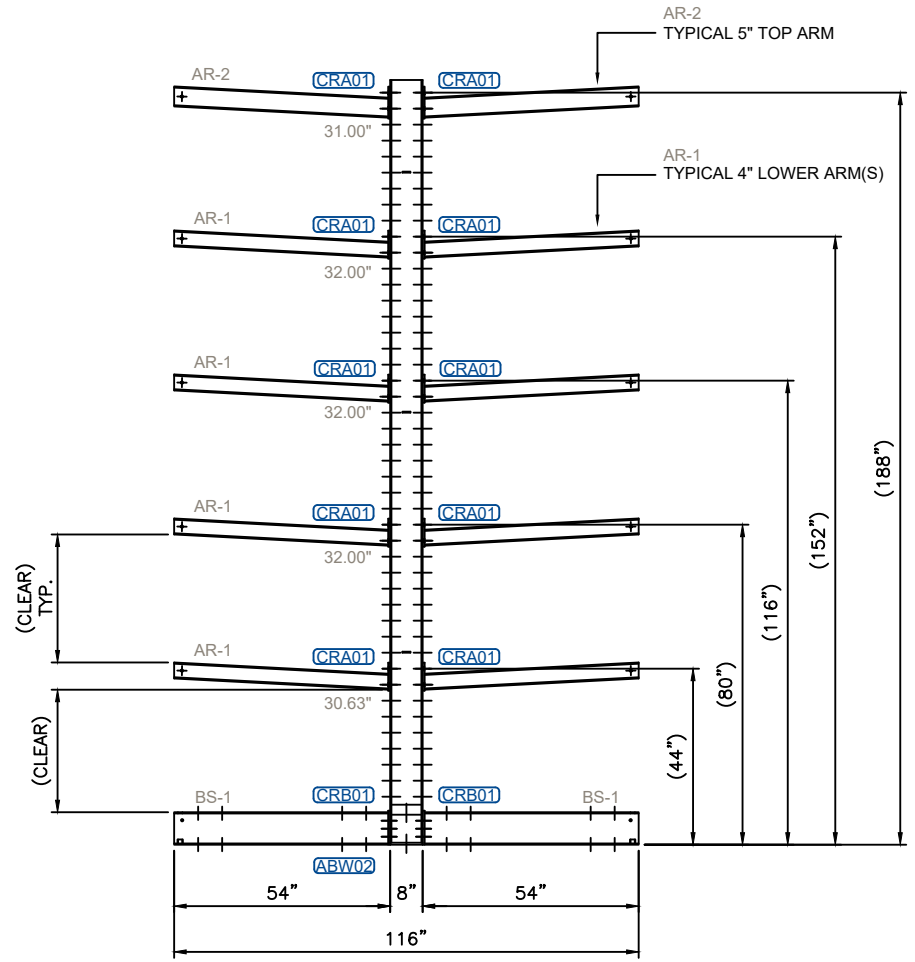


****CORRECT BRACING****
 (TYPICAL NON-SEISMIC BRACING)
 COLUMNS MUST BE BRACED IN PAIRS
 w/ AN X-BRACE PANEL(XB-1)

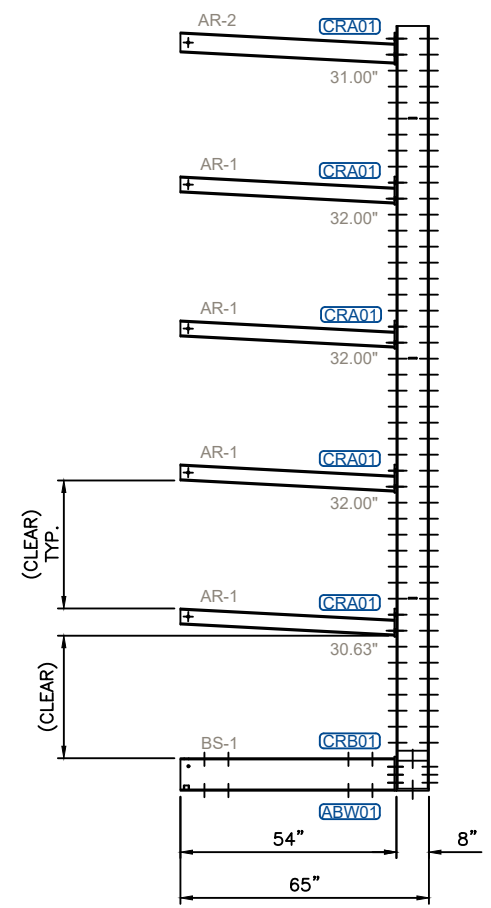
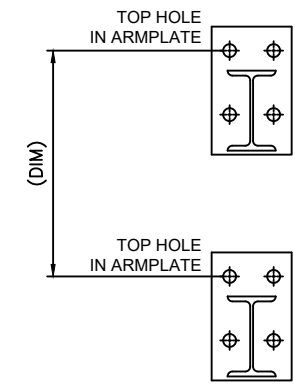
INCORRECT NON-SEISMIC BRACING



****INCORRECT BRACING****
 DO NOT INSTALL A PAIR OF COLUMNS
 w/ (3) HORIZONTALS ONLY
 AN X-BRACE PANEL(XB-1) MUST BE INSTALLED

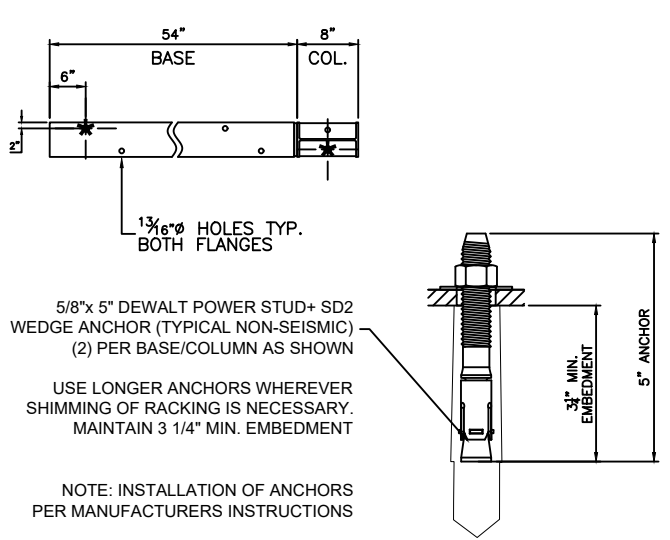


ARM SPACING VARIES DEPENDING
 ON PLAN-O-GRAM



100	CANTILEVER RACK ASSEMBLY
RK1	SCALE: 1/2" = 1'-0"

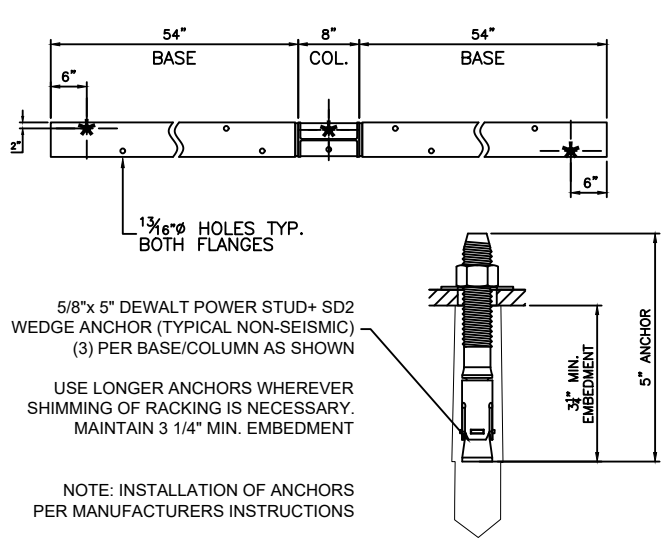
TYPICAL NON-SEISMIC ANCHORING



CANTILEVER RACK
 ANCHOR BOLT CONNECTION - SINGLE SIDED

ABW01	RK1		
-------	-----	--	--

TYPICAL NON-SEISMIC ANCHORING



CANTILEVER RACK
 ANCHOR BOLT CONNECTION - DOUBLE SIDED

ABW02	RK1		
-------	-----	--	--

COLUMN TYPE(S)			
MARK	SIZE	O.A.H (H)	DESCRIPTION
RC-1	W8x18#	190.50"	COLUMNS
BASE TYPE(S)			
MARK	SIZE	O.A.L (L)	DESCRIPTION
BS-1	W8x18#	54.00"	BASES
BRACE TYPE(S)			
MARK	SIZE	O.A.L (L)	DESCRIPTION
HB-1	3/16"	31.75"	2"x2" ANGLE, HORIZONTAL BRACE
XB-1	3/16"	62.25"	2"x2" ANGLE, X-BRACE
ARM TYPE(S)			
MARK	SIZE	O.A.L (L)	DESCRIPTION
AR-1	S4x7.7#	54.00"	TYPICAL ARM LEVEL
AR-2	S5x10#	54.00"	TOP ARM LEVELS

- MATERIAL SPECIFICATIONS FOR STEEL:
1. ALL COLUMNS, BASES, AND LOAD ARMS TO HAVE AN Fy = 50 ksi.
 2. ALL BRACE PANELS TO HAVE Fy = 36 ksi.
 3. ALL WELDING ROD TO BE E70 OR BETTER.
 4. ALL BOLTS TO BE GRADE GR. 5.

CONN. ID	DETAIL	SHEET	CONNECTION TYPE(S)	CONNECTION DESCRIPTION(S)
ABW01	RK1		(2) 5/8" x 5" DEWALT STUD+ SD2 (TYPICAL NON-SEISMIC) WEDGE ANCHORS	CANTILEVER RACK ANCHOR BOLT CONNECTION - SINGLE SIDED
ABW02	RK1		(3) 5/8" x 5" DEWALT STUD+ SD2 (TYPICAL NON-SEISMIC) WEDGE ANCHORS	CANTILEVER RACK ANCHOR BOLT CONNECTION - DOUBLE SIDED
CRB01	..		(6) 3/4" x 2" GR. 5 BOLT	CANTILEVER RACK 8" BASE CONNECTION
CRA01	..		(4) 3/4" x 2" GR. 5 BOLT	CANTILEVER RACK ARM CONNECTION
CRX01	..		(4) 3/4" x 2" GR. 5 BOLT	CANTILEVER RACK X-BRACE CONNECTION
CRH01	..		(2) 3/4" x 2" GR. 5 BOLT	CANTILEVER RACK HORIZONTAL BRACE CONNECTION

REV.	DATE	DESCRIPTION	DRFT/CHKD	ENG
00	11/04/99		EDGE	
01	07/27/2015	REVISED	EDGE	
02	07/21/2020	REVISED	EXAR	TD

© Copyright 2019 by WTD Holdings, Inc. All rights reserved. This document is property of WTD Holdings, Inc. It is to be used only for the specific project referred to or identified herein and is not to be used on other projects, in whole or in part, except by the express written agreement of WTD Holdings, Inc.

LOWE'S

A Division of WTD Holdings, Inc.
 2255 Justin Trail | Alpharetta, GA 30004
 (PH) 800.353.0892 (FAX) 770.569.9944
 www.CT-Damell.com | www.Sunbelt-Rack.com

PROJECT NUMBER: Q99-99999
 SALES PERSON: [Name]

LOWE'S

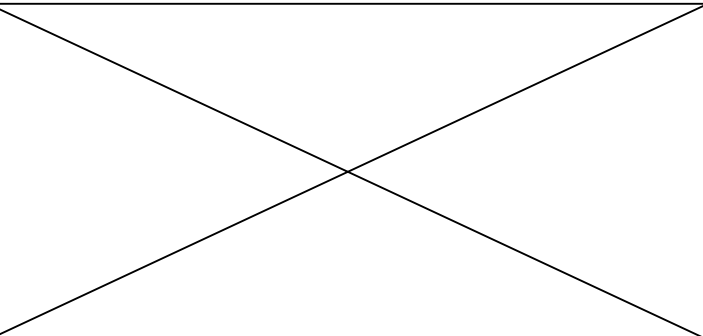
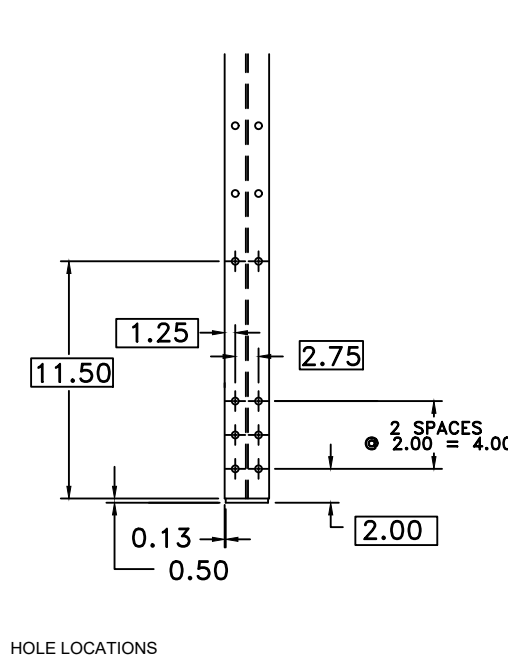
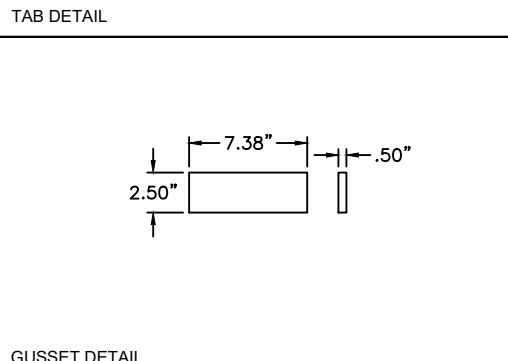
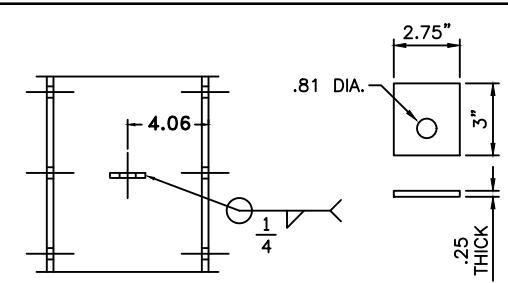
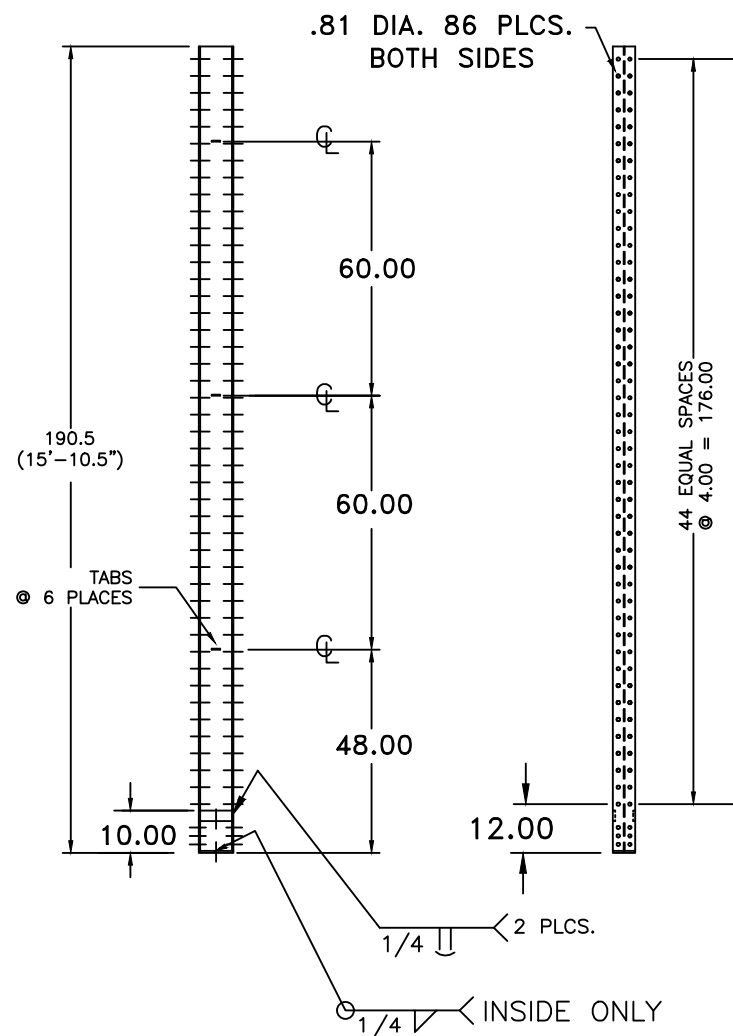
PROJECT NAME: CANTILEVER RACK
 SHEET DESCRIPTION: CANTILEVER RACK
 INSTALLATION & NOTES

SHEET FILE NO: [Name]

STRC #:	SHEET NO:
	RK1

SCALE: AS NOTED

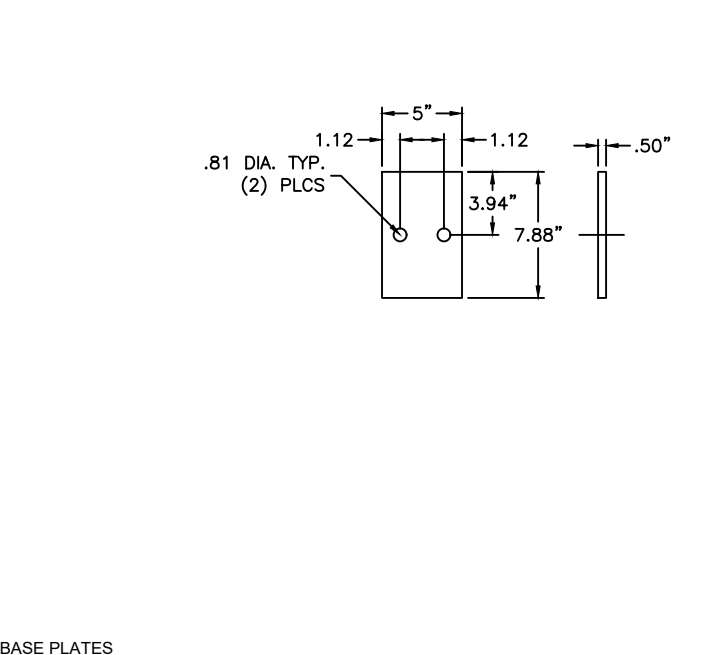
COLUMN TYPE(S)			
MARK	SIZE	O.A.H (H)	DESCRIPTION
RC-1	W8x18#	190.50"	COLUMNS



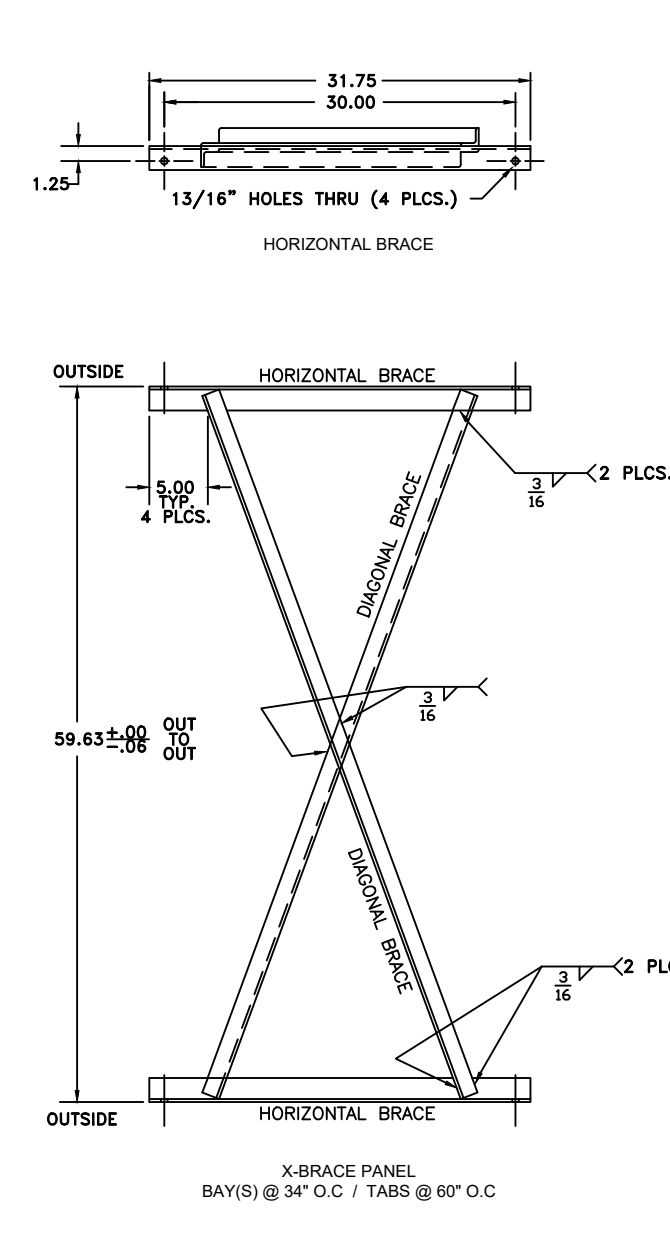
WELD IN ACCORDANCE WITH STRUCTURAL WELDING CODE AWS-D1.1-2002

MATERIAL SPECIFICATIONS FOR STEEL:

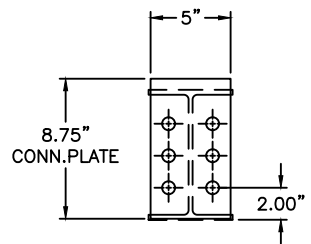
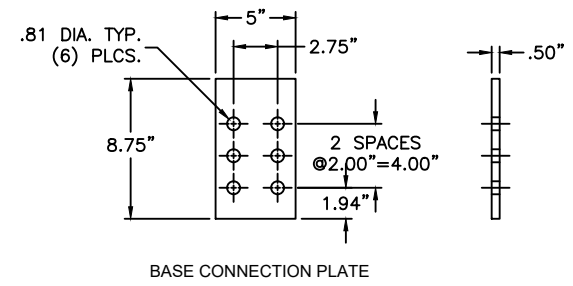
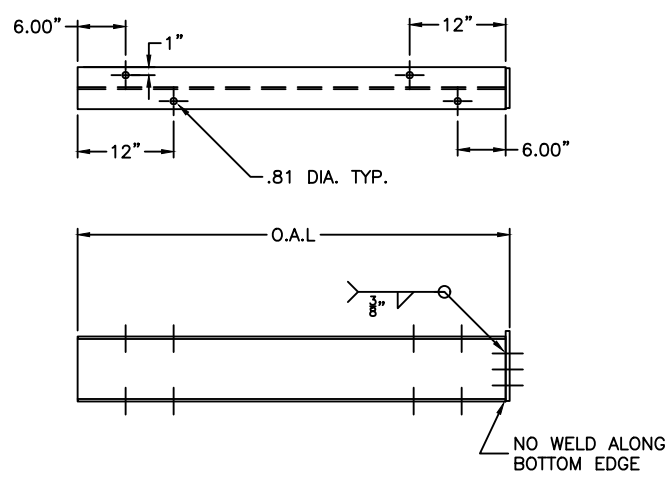
1. ALL COLUMNS, BASES, AND LOAD ARMS TO HAVE AN $F_y = 50$ ksi.
2. ALL BRACE PANELS TO HAVE $F_y = 36$ ksi.
3. ALL WELDING ROD TO BE E70 OR BETTER.
4. ALL BOLTS TO BE GR 5.



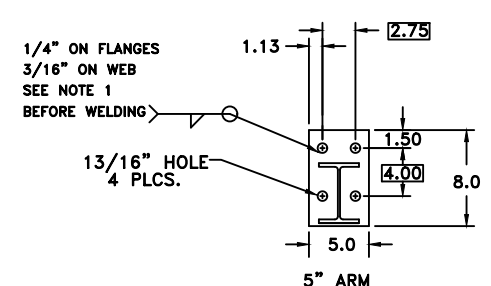
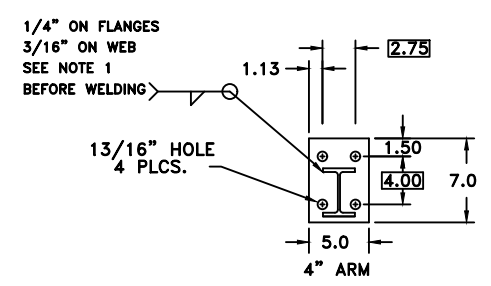
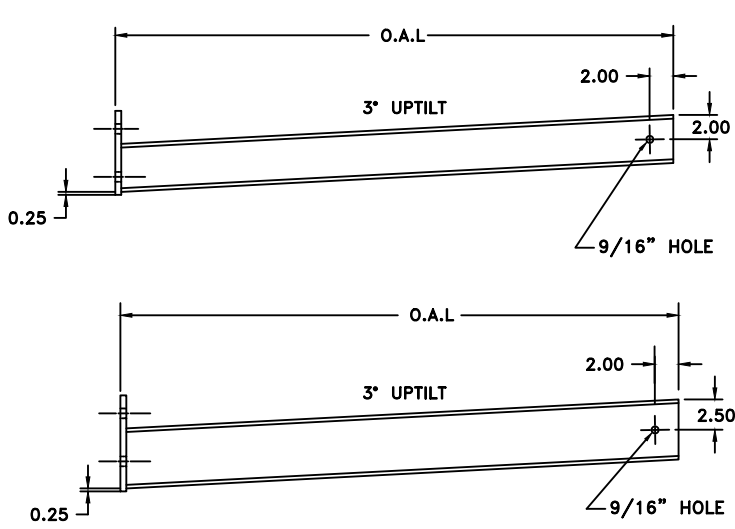
BRACE TYPE(S)			
MARK	SIZE	O.A.L (L)	DESCRIPTION
HB-1	3/16"	31.75"	2"x2" ANGLE, HORIZONTAL BRACE
XB-1	3/16"	62.25"	2"x2" ANGLE, DIAGONAL BRACE



BASE TYPE(S)			
MARK	SIZE	O.A.L (L)	DESCRIPTION
BS-1	W8x18#	54.00"	BASES



ARM TYPE(S)			
MARK	SIZE	O.A.L (L)	DESCRIPTION
AR-1	S4x7.7#	54.00"	TYPICAL ARM LEVEL
AR-2	S5x10#	54.00"	TOP ARM LEVELS



REV.	DATE	DESCRIPTION	DRFT/CHK/ENG
00	11/04/99		EDGE
01	07/27/2015	REVISED	EDGE

PROJECT NUMBER: Q99-99999

SALESPERSON:

© Copyright 2019 by WTD Holdings, Inc. All rights reserved. This document is property of WTD Holdings, Inc. It is to be used only for the specific project referred to or identified herein and is not to be used on other projects, in whole or in part, except by the express written agreement of WTD Holdings, Inc.

A Division of WTD Holdings, Inc.
2255 Justin Trail | Alpharetta, GA 30004
(PH) 800.353.0892 (FAX) 770.569.9944
www.CT-Damell.com | www.Sunbelt-Rack.com

PROJECT NAME: LOWES

SHEET DESCRIPTION: CANTILEVER RACK INSTALLATION & NOTES

SHEET FILE NO: RK1

SCALE: AS NOTED