



# Tension / Shear Pin Replacement Guidelines

## ***Power Truck™ Series***

***Fixture Mobilization Equipment***

**Mobex, Inc.**

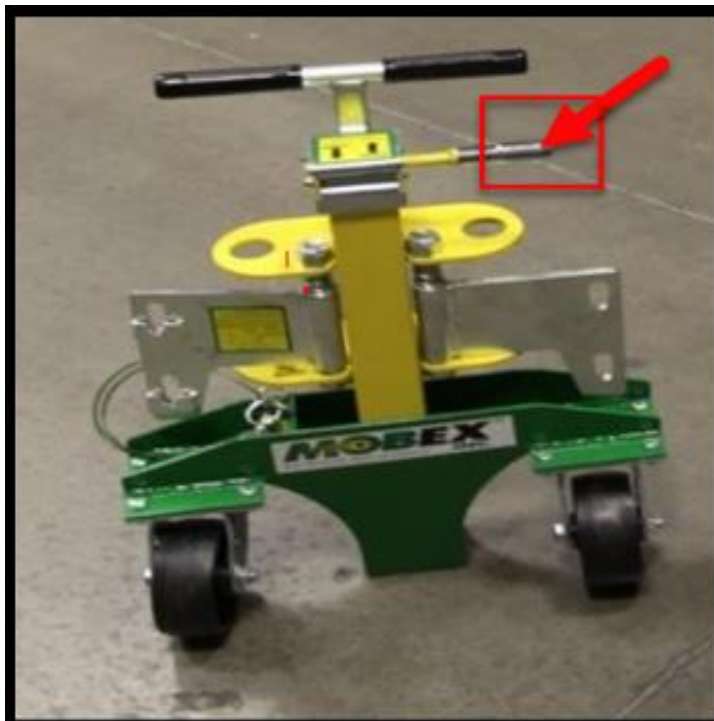
9636 Heckscher Drive  
Jacksonville, FL 32226

Website: [www.mobexinc.net](http://www.mobexinc.net)

Phone: 1-904-281-9277

First Release 5/20/2010

**Note: Never use an impact drill or power drill to run the Mobex Power Truck up or down. Using this will cause damage to the unit.**

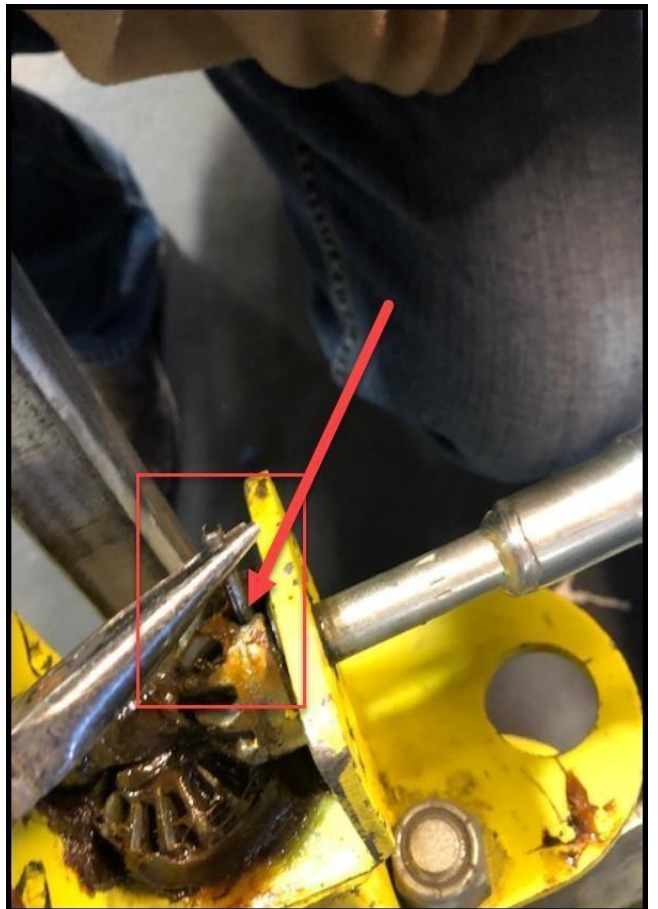


Remove bolts from dust cover from the top of the Power Truck:



Carefully remove the dust cover:

Carefully remove the tension / shear pin:



5/32 x 1 1/4 Tension Pin

